



432141231423 Fridman House, Olympic Way, Wembley, HA9 0PL
£1,900



432141231423 Fridman House, Olympic Way, Wembley, HA9 0PL

£1,900

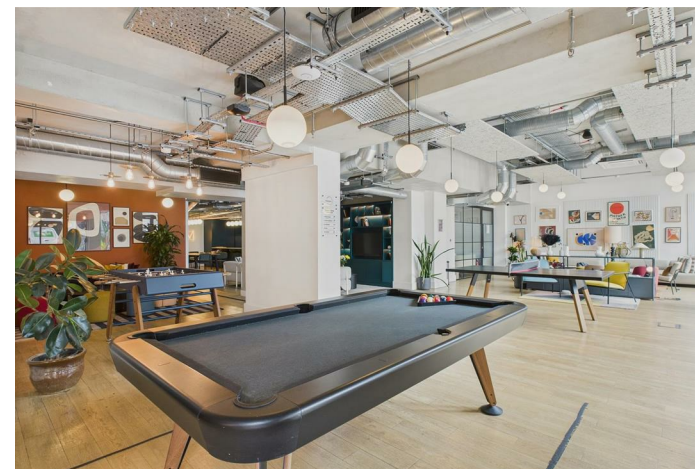
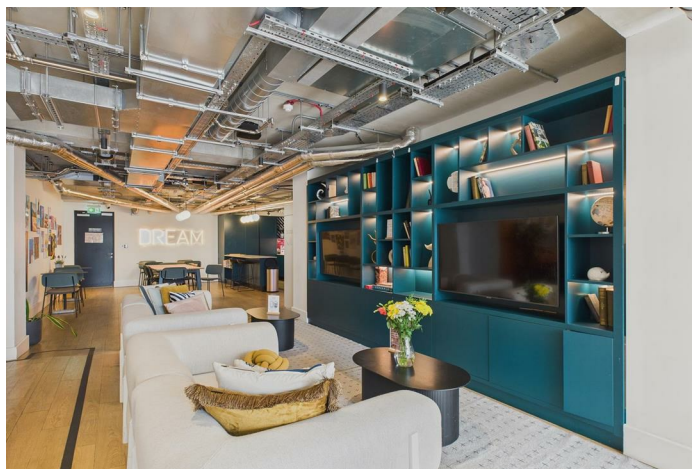
Larger than average 1 bedroom apartments in the heart of Wembley Park, offering over 600 sq ft of internal space and views of Wembley Stadium.

With Multiple Lounges, Residents Gym, Co-working spaces, Cinema Room, Concierge. and residents lounge. Fridman & Merevale House have been extensively refurbished over the years and now provide a spectacular living experience for those wanting to live in a quiet and safe environment.

Description

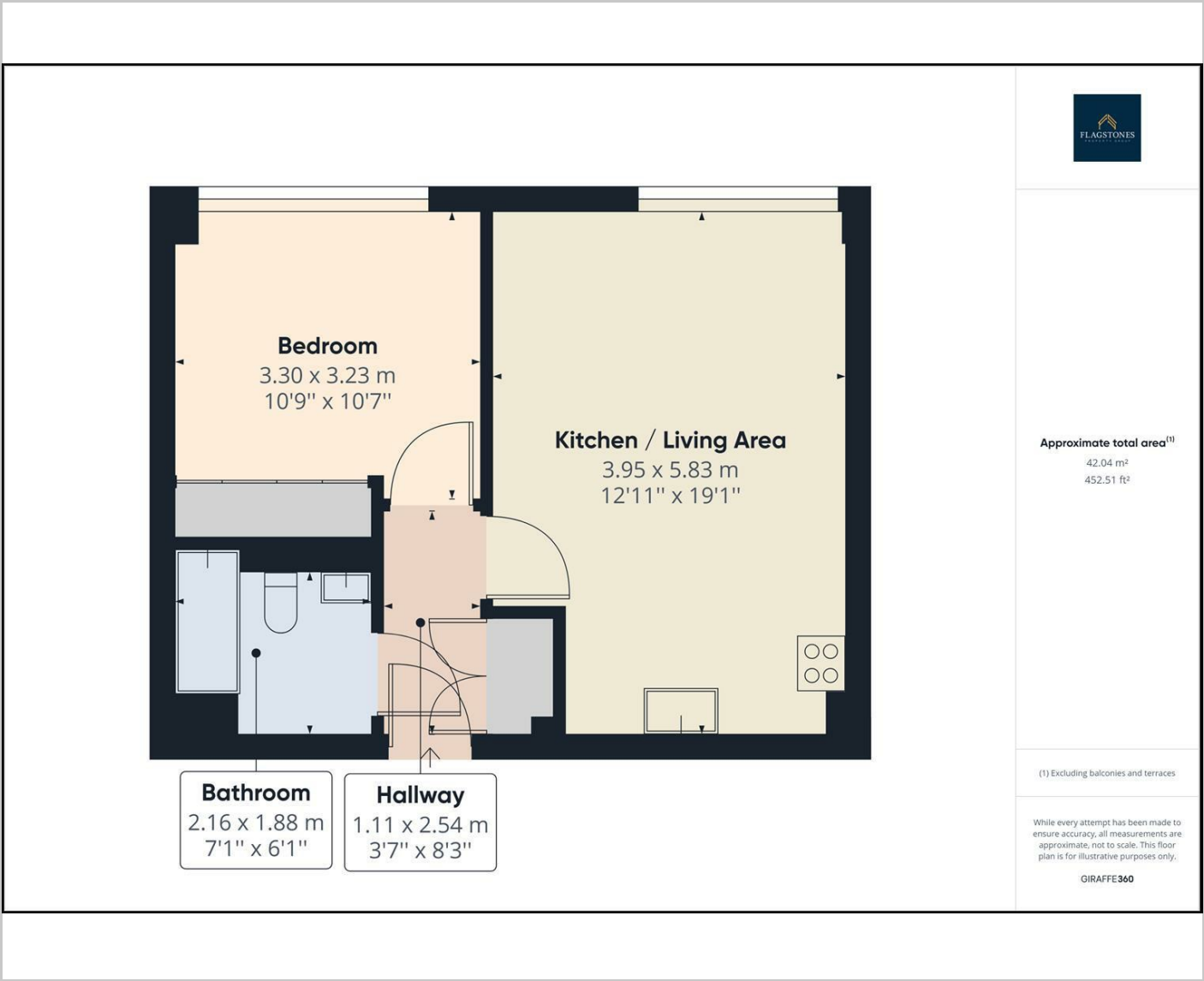


Situation

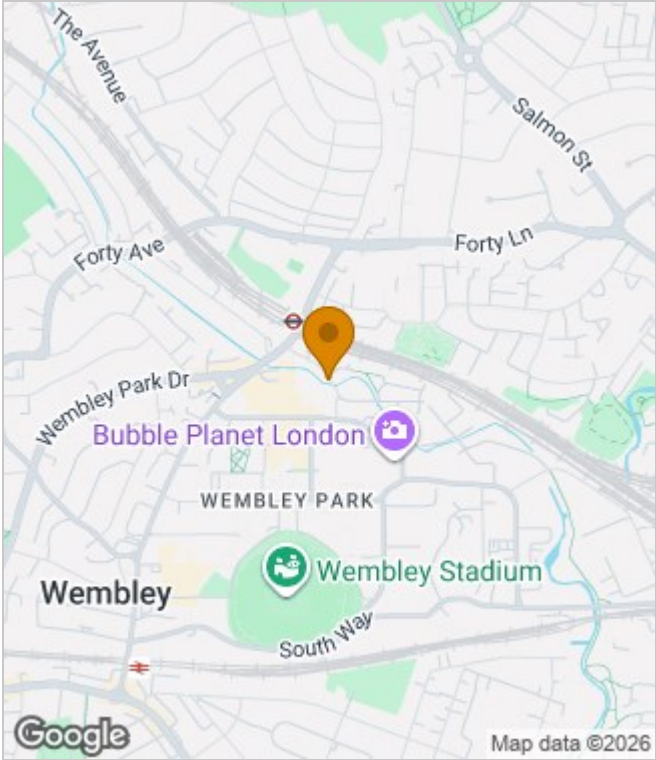


Furnished
Council Tax Band: C
Available:

Floor Plans



Area Map



Energy Performance Graph



These particulars, whilst believed to be accurate are set out as a general outline only for guidance and do not constitute any part of an offer or contract. Intending purchasers should not rely on them as statements of representation of fact, but must satisfy themselves by inspection or otherwise as to their accuracy. No person in this firms employment has the authority to make or give any representation or warranty in respect of the property.